

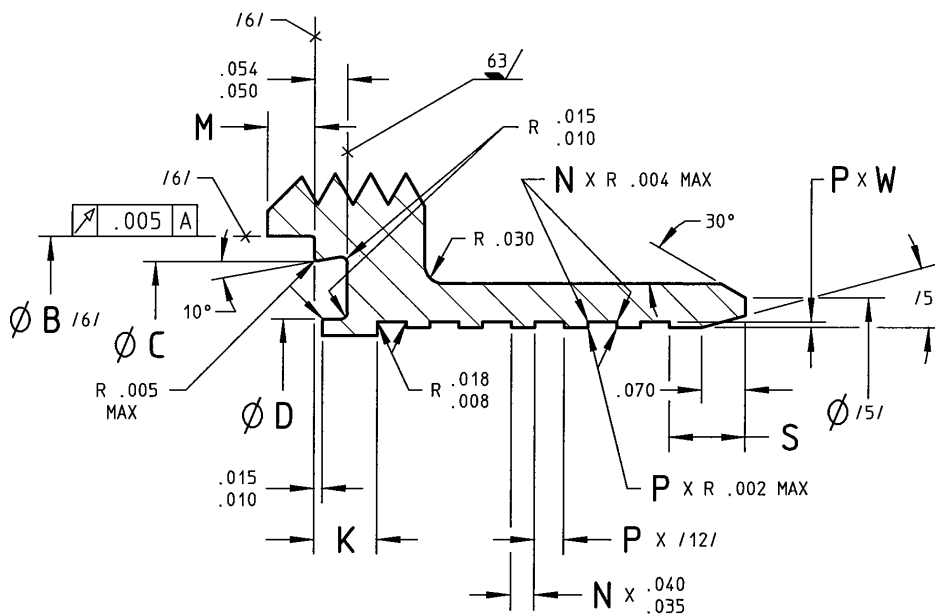
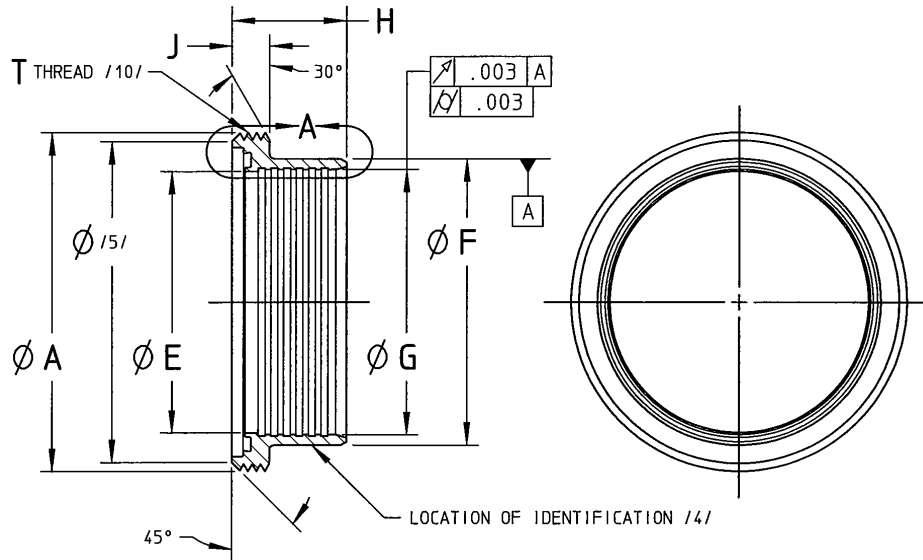
RATIONALE

REDRAWN FOR CLARITY, UPDATED WEIGHTS AND ADDED PRI/QPL REQUIREMENTS.

REV.
E

SAE AS1732

SAE Technical Standards Board Rules provide that: "This report is published by SAE to advance the state of technical and engineering sciences. The use of this report is entirely voluntary, and its applicability and suitability for any particular use, including any patent infringement arising therefrom, is the sole responsibility of the user." SAE reviews each technical report at least every five years at which time it may be reaffirmed, revised, or cancelled. SAE invites your written comments and suggestions.

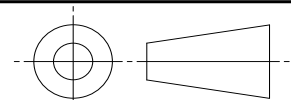


ENLARGED VIEW A

FIGURE 1 - BODY

SAE values your input. To provide feedback on this Technical Report, please visit <http://www.sae.org/technical/standards/AS1732E>

THIRD ANGLE PROJECTION



CUSTODIAN: SAE G-3/G-3A

PROCUREMENT SPECIFICATION: /3/ AS1730

SAE Aerospace
An SAE International Group

AEROSPACE STANDARD


BODY, COUPLING, RIGID, FIXED CAVITY, THREADED, FERRULE TYPE TUBE ENDS, TYPE I

SAE AS1732
SHEET 1 OF 4

REV. E

TABLE 1 - COUPLING BODY DIMENSIONS

BASIC NO. AS1732 SIZE CODE /14/	(TUBE SIZE)	THREAD T PER FED-STD-H28/2 OR ASME B1.1 /10/ MOD	A +.005 -.000	B +.005 -.000	C +.010 -.000	D +.000 -.010	E +.005 -.000	F +.005 -.000	G	G TOL	H
04	.250	.687-12 UN-2A	.680	.529	.480	.298	.233	.375	.254	+.005/- .000	.645
05	.312	.750-12 UN-2A	.743	.580	.535	.353	.295	.437	.316	+.005/- .000	.645
06	.375	.812-12 UN-2A	.805	.635	.590	.408	.358	.500	.379	+.005/- .000	.645
08	.500	.937-12 UN-2A	.930	.762	.716	.534	.483	.625	.504	+.005/- .000	.645
10	.625	1.062-12 UN-2A	1.055	.900	.850	.668	.609	.750	.630	+.005/- .000	.675
12	.750	1.250-12 UNF-2A	1.243	1.033	.984	.802	.734	.890	.755	+.005/- .000	.675
16	1.000	1.500-12 UNF-2A	1.493	1.284	1.235	1.053	.984	1.142	1.005	+.005/- .000	.675
20	1.250	1.750-12 UN-2A	1.743	1.534	1.485	1.303	1.235	1.392	1.256	+.005/- .000	.675
24	1.500	2.000-12 UN-2A	1.993	1.783	1.735	1.553	1.480	1.642	1.506	+.005/- .000	.760
28	1.750	2.250-12 UN-2A	2.243	2.045	1.965	1.783	1.730	1.895	1.756	+.005/- .000	.760
32	2.000	2.500-12 UN-2A	2.493	2.292	2.235	2.053	1.981	2.145	2.006	+.005/- .000	.760
36	2.250	2.750-12 UN-2A	2.743	2.545	2.485	2.283	2.231	2.395	2.257	+.005/- .000	.760
40	2.500	3.000-12 UN-2A	2.993	2.800	2.713	2.531	2.481	2.645	2.507	+.005/- .000	.760
44	2.750	3.250-12 UN-2A	3.243	3.045	2.961	2.781	2.731	2.895	2.757	+.005/- .000	.760
48	3.000	3.625-12 UN-2A	3.618	3.395	3.340	3.158	2.979	3.145	3.007	+.005/- .000	.705
56	3.500	4.125-12 UN-2A	4.118	3.895	3.840	3.658	3.479	3.645	3.509	+.005/- .000	.705
64	4.000	4.625-12 UNS-2A /10/	4.603	4.395	4.340	4.158	3.979	4.155	4.009	+.005/- .000	.705
72	4.500	5.125-12 UNS-2A /10/	5.103	4.895	4.840	4.658	4.479	4.655	4.509	+.006/- .000	.884
80	5.000	5.625-12 UNS-2A /10/	5.602	5.378	5.325	5.143	4.979	5.155	5.009	+.006/- .000	.868

 An SAE International Group	AEROSPACE STANDARD	SAE AS1732 SHEET 2 OF 4	REV. E
	BODY, COUPLING, RIGID, FIXED CAVITY, THREADED, FERRULE TYPE TUBE ENDS, TYPE I		